

# Department of Commercial Music, Visual and Performing Arts

**Department Chair:** John Freyermuth  
**Office:** Performing Arts Center, Office 137D  
**Email:** [freyermuthje@lamarpa.edu](mailto:freyermuthje@lamarpa.edu)  
**Phone:** 409-984-6520

The Department of Commercial Music, Visual and Performing Arts offers Associate of Applied Science Degrees in Performance, Audiovisual Production, and Sound Engineering. The Department of Commercial Music also offers certificates in Music and Live Sound, and Design Technology.

Potential employers include entertainment venues, audio production companies, broadcast facilities, churches, corporate audiovisual facilities, recording studios, publishing companies, and independent multimedia production companies. Other opportunities are available in the field when sufficient work experience is combined with academic preparation including record production, publishing, artist management, concert promotion, venue management, music merchandising and teaching.

Graduates will have a strong background in appropriate core sub disciplines: music theory, keyboard, video editing, sound design, sound system repair and installation, arranging and composing music, acoustics and music business training. Courses are carefully sequenced and designed around student outcomes and include general education components that foster problem-solving and communication skills. Laboratory training encompasses state-of-the-art instruments, materials and techniques employed in the commercial music industry, plus a dedicated performance hall.

Non-Performance majors may enroll in applied lessons and ensembles.

## Associate of Arts Degree

1. Emphasis in Drama
2. Emphasis in Teaching Music EC-12
3. Emphasis in Teaching Theatre Arts EC-12

## Associate of Applied Science Degrees

1. Audiovisual Production Program
2. Commercial Music-Performance Program
3. Commercial Music-Sound Engineer Program

## Certificate Degrees

1. Music Certificate
2. Certificate in Live Sound Design and Technology

## Associate of Arts Degrees



## Emphasis in Drama

**Contact:** John Freyermuth  
**Office:** Performing Arts Center, Office 137D  
**Email:** [freyermuthje@lamarpa.edu](mailto:freyermuthje@lamarpa.edu)  
**Phone:** 409-984-6520

The Emphasis in Drama curriculum is designed for students who plan to pursue a baccalaureate degree with a major in theater or a pre-professional degree in law. The degree plan provides a Core Curriculum that will transfer to any state supported college or university in Texas. It includes the general education requirements for almost any baccalaureate degree. The electives beyond the Core Curriculum allow students to explore various aspects of the performing arts.

## Recommended Program of Study Associate of Arts Degree in Drama

Course.....	Credit
Core Curriculum Courses .....	42
BCIS 1305 Business Computer Applications .....	3
DRAM Courses .....	15
<b>Total Hours .....</b>	<b>60</b>

*\* To fulfill the Core Curriculum requirement, students should take MUSI 1306 or MUSI 1310 as part of the Creative Arts component.*



### Emphasis in Teaching Music EC-12

**Contact:** John Freyermuth  
**Office:** Performing Arts Center, Office 137D  
**Email:** [freyermuthje@lamarpa.edu](mailto:freyermuthje@lamarpa.edu)  
**Phone:** 409-984-6520

The Teaching Music EC 12<sup>7</sup> curriculum is the first two years of a track designed for students who plan to complete a bachelor's degree and be certified to teach music in the public schools. The degree was developed by the *Texas Higher Education Coordinating Board* and serves as a guide for colleges and universities in structuring the first two years of a curriculum for music education majors.

#### Recommended Program of Study for Teaching Music EC-12

Courses.....	Credit
Core Curriculum Courses* .....	42
BCIS 1305 Business Computer Applications .....	3
EDUC 1301 Introduction to the Teaching Profession .....	3
EDUC 2301 Introduction to Special Populations....	3
MUSI Courses .....	9
<b>Total Hours .....</b>	<b>60</b>

*\* To fulfill the Core Curriculum requirement, students should take MUSI 1306 or MUSI 1310 as part of the Creative Arts component.*

### Emphasis in Teaching Theater Arts EC-12

**Contact:** John Freyermuth  
**Office:** Performing Arts Center, Office 137D  
**Email:** [freyermuthje@lamarpa.edu](mailto:freyermuthje@lamarpa.edu)

**Phone:** 409-984-6520

The Teaching Theater Arts EC-12 curriculum is designed for students who plan to pursue a bachelor's degree in education to be certified to teach drama classes at some level from early childhood/kindergarten to grade 12.

#### Recommended Program of Study Associate of Arts Degree in Teaching Theatre Arts EC-12

Course.....	Credit
Core Curriculum Courses (See pg 58).....	42
BCIS 1305 Business Computer Applications .....	3
EDUC 1301 Introduction to the Teaching Profession .....	3
EDUC 2301 Introduction to Special Populations....	3
DRAM Courses .....	9
<b>Total Hours.....</b>	<b>60</b>

*To fulfill the Core Curriculum requirement, students should take DRAM 1310 as part of the Creative Arts component and should take DRAM 2361 as part of the Language, Philosophy, and Culture component.*



#### Associate of Applied Science Degrees

### Audiovisual Production Program

**Contact:** John Freyermuth  
**Office:** Performing Arts Center, Office 137D  
**Email:** [freyermuthje@lamarpa.edu](mailto:freyermuthje@lamarpa.edu)  
**Phone:** 409-984-6520

The Audiovisual Production program blends music production, sound design and video technology to create compelling multimedia content for all forms of visual media including web, video, film, animation, mobile technology, and games.

The Audiovisual Production Program goals are to provide hands-on training utilizing industry-standard technology while focusing on professional best practices to build a music production and sound

<sup>7</sup> EC-12: Early Childhood thru 12<sup>th</sup> Grade

design portfolio that supports the visual narrative and demonstrates a broad range of creative skill sets including video editing, music composition, and sound design.

Graduates of the Audiovisual Production Program are prepared for entry level positions such as audio and video editors, production assistants, sound designers, multimedia composers and audiovisual technicians.

Students must earn a minimum grade of 'C' in all technical courses in the Recommended Program of Study.

### Recommended Program of Study Associate of Applied Science in Audiovisual Production

#### First Year

<b>First Semester.....</b>	<b>Credit</b>
MATH 1332 Quantitative Reasoningor	
MATH 1314 College Algebra.....	3
MUSI 1181 Piano Class I.....	1
MUSI 1301 Fundamentals of Music I.....	3
MUSC 1327 Audio Engineering I.....	3
MUSC 1325 Acoustics.....	3
<b>Total Hours.....</b>	<b>13</b>

<b>Second Semester.....</b>	<b>Credit</b>
MUSI 1182 Piano Class II.....	1
ENGL 1301 Composition I.....	3
MUSC 1331 MIDI I.....	3
MUSC 2327 Audio Engineering II.....	3
RTVB 2330 Film and Video Editing.....	3
COMM 1336 Video Production I.....	3
<b>Total Hours.....</b>	<b>16</b>

<b>Summer Semester.....</b>	<b>Credit</b>
Social/Behavioral Science Course.....	3
<b>Total Hours.....</b>	<b>3</b>

<b>Third Semester.....</b>	<b>Credit</b>
SPCH 1315 Public Speaking.....	3
MUSC 1333 Synthesis I.....	3
FLMC 2330 Audio Post Production.....	3
MUSC 2347 Audio Engineering III.....	3
MUSI 1310 American Music.....	3
<b>Total Hours.....</b>	<b>15</b>

<b>Fourth Semester.....</b>	<b>Credit</b>
-----------------------------	---------------

MUSC 1196 Special Topics in Recording Arts Technology/Technician.....	1
MUSC 2330 Commercial Music Arranging and Composition.....	3
MUSC 2351 Audio for Video.....	3
MUSB 1305 Survey of the Music Business.....	3
RTVB 2340 Portfolio Development.....	3
<b>Total Hours.....</b>	<b>13</b>
<b>Grand Total:.....</b>	<b>60</b>



### Commercial Music-Performance Program

**Contact:** John Freyermuth  
**Office:** Performing Arts Center, Office 137D  
**Email:** [freyermuthje@lamarpa.edu](mailto:freyermuthje@lamarpa.edu)  
**Phone:** 409-984-6520

The Commercial Music-Performance Program is designed to prepare students for jobs as musicians in the entertainment industry.

Employment opportunities include session musician, live venue musician, music arranger/orchestrator and songwriter. Potential employers include entertainment venues, audio production companies, recording studios, publishing companies and independent soundtrack producers. Other opportunities available in the field when sufficient work experience is combined with academic preparation includes record production, publishing, artist management, concert promotion, venue management, music merchandising and teaching.

Graduates have a strong background in appropriate core sub disciplines of ensemble performance, music theory, writing, orchestration, arranging and composing music and music business training. Laboratory training encompasses state-of-the-art instruments, materials and techniques employed in the commercial music industry, plus a dedicated Commercial Music Performance Hall.

Students must earn a minimum grade of 'C' in all technical courses in the Recommended Program of Study.

Recommended Program of Study  
Associate of Applied Science  
Degree in Commercial Music-  
Performance

**First Year**

<b>First Semester</b> .....	<b>Credit</b>
MATH 1332 Quantitative Reasoning or MATH 1314 College Algebra.....	3
MUSI 1301 Fundamentals of Music I.....	3
MUSI 1181 Piano Class I.....	1
MUSP 12XX Applied Commercial Music Course....	2
MUSP 1242 Small Commercial Music Ensemble ...	2
SPCH 1315 Public Speaking.....	3
<b>Total Hours</b> .....	<b>14</b>

<b>Second Semester</b> .....	<b>Credit</b>
ENGL 1301 Composition I.....	3
MUSP 12XX Applied Commercial Music Course....	2
MUSP 1240 Large Commercial Music Ensemble: Band .....	2
MUSC 1211 Commercial Music Sight Singing and Ear Training I.....	2
MUSC 1213 Commercial Music Theory I.....	2
MUSC 1331 MIDI I .....	3
MUSI 1182 Piano Class II.....	1
<b>Total Hours</b> .....	<b>15</b>

<b>Summer Semester</b>	
PSYC 1300 Learning Framework.....	3
<b>Total Hours</b> .....	<b>3</b>

**Second Year**

<b>Third Semester</b> .....	<b>Credit</b>
MUSP 12XX Applied Commercial Music Course....	2
MUSP 1253 Small Commercial Music Ensemble: Rock .....	2
MUSC 2211 Commercial Music Sight Singing/Ear Training II .....	2
MUSC 2213 Commercial Music Theory II.....	2
MUSP 2103 Commercial Class Piano .....	1
MUSC 1321 Songwriting I.....	3
MUSI 1310 American Music .....	3
<b>Total Hours</b> .....	<b>15</b>

<b>Fourth Semester</b>	
MUSC 2330 Commercial Music Arranging & Composition .....	3

MUSP 12XX Applied Commercial Music Course....	2
MUSP 1151 Small Commercial Music Ensemble: Recording.....	1
MUSB 1305 Survey of the Music Business .....	3
MUSP 1202 Introductory Group Voice.....	2
MUSC 1235 Commercial Music Software .....	2
<b>Total Hours</b> .....	<b>13</b>
<b>Grand Total:</b> .....	<b>60</b>



Recommended Program of Study  
Music Certificate

**First Year**

<b>First Semester</b> .....	<b>Credit</b>
MUSI 1301 Fundamentals of Music I.....	3
<b>Total Hours</b> .....	<b>3</b>

<b>Second Semester</b> .....	<b>Credit</b>
MUSC 1213 Commercial Music Theory I.....	2
MUSC 1211 Commercial Music Sight Singing and Ear Training I.....	2
MUSI 1181 Piano Class I.....	1
MUSI 1310 American Music.....	3
MUSC 2330 Commercial Music Arranging and Composition .....	3
MUSC 1331 MIDI I .....	3
<b>Total Hours</b> .....	<b>14</b>

<b>Second Semester</b> .....	<b>Credit</b>
MUSC 2213 Commercial Music Theory II.....	2
MUSC 2211 Commercial Music Sight Singing and Ear Training II .....	2
MUSI 1182 Piano Class II.....	1
MUSB 1305 Survey of the Music Business .....	3
MUSC 1321 Songwriting I.....	3
MUSC 1235 Commercial Music Software .....	2
<b>Total Hours</b> .....	<b>13</b>
<b>Grand Total</b> .....	<b>30</b>



## Commercial Music–Sound Engineer Program

**Contact:** John Freyermuth  
**Office:** Performing Arts Center, Office 137D  
**Email:** [freyermuthje@lamarpa.edu](mailto:freyermuthje@lamarpa.edu)  
**Phone:** 409-984-6520

The Commercial Music Sound Engineer Program prepares students for audio production jobs in the music industry. Employment opportunities include recording engineer, audio producer, sound designer and MIDI programmer.

Potential employers include advertising agencies, audio production companies, recording studios, record labels and publishing companies. Other opportunities will be available in the field when sufficient work experience is combined with academic preparation include record production, publishing, artist management, concert promotion, venue management and music merchandising.

Graduates will have a strong background in the appropriate core sub-disciplines of music theory; writing, orchestrating, arranging and composing music; audio recording; and the music industry. Laboratory training encompasses state-of-the-art instruments, materials and techniques employed in the commercial music industry.

Students must earn a minimum grade of 'C' in all technical courses in the Recommended Program of Study.

### Recommended Program of Study Associate of Applied Science in Commercial Music–Sound Engineer

<b>First Year</b>	
<b>First Semester</b> .....	<b>Credit</b>
MUSC 1327 Audio Engineering I .....	3
MUSI 1301 Fundamentals of Music I.....	3
MUSI 1181 Piano Class I.....	1
MUSC 1325 Acoustics .....	3
SPCH 1315 Public Speaking.....	3
<b>Total Hours</b> .....	<b>13</b>
<b>Second Semester</b> .....	<b>Credit</b>
MATH 1332 Quantitative Reasoning or MATH 1314 College Algebra.....	3
MUSC 2327 Audio Engineering II .....	3
MUSC 1211 Commercial Music Sight Singing and Ear Training I.....	2
MUSC 1213 Commercial Music Theory I.....	2
MUSC 1331 MIDI I.....	3
MUSI 1182 Piano Class II.....	1

**Total Hours** ..... 14

#### Summer Semester

PHYS 1415 Physical Science or  
PHYS 1405 Elementary Physics ..... 4  
**Total Hours** ..... 4

#### Third Semester ..... Credit

MUSC 1196 Special Topics in Recording Arts  
Technology/Technician..... 1  
MUSC 2347 Audio Engineering III ..... 3  
MUSC 1405 Live Sound I ..... 4  
MUSI 1310 American Music ..... 3  
PSYC 1300 Learning Framework..... 3  
**Total Hours**..... 14

#### Fourth Semester

MUSC 2448 Audio Engineering IV ..... 4  
MUSB 1305 Survey of the Music Business ..... 3  
MUSC 2403 Live Sound II ..... 4  
MUSC 1423 Audio Electronics..... 4  
**Total Hours**..... 15  
**Grand Total:**..... 60

## Live Sound Design and Technology

**Contact:** John Freyermuth  
**Office:** Performing Arts Center, Office 137D  
**Email:** [freyermuthje@lamarpa.edu](mailto:freyermuthje@lamarpa.edu)  
**Phone:** 409-984-6520

The Live Sound Design and Technology Certificate blends creative application of live sound reinforcement with solid foundation in electronics theory, circuitry and system installation. The certificate may be completed in one year. Twenty-four credits are focused in the area of live sound, maintenance, and installation of audiovisual systems. The other six credits focus specifically on the fundamentals of electricity, circuits, and digital fundamentals.

Students must earn a minimum grade of 'C' in all technical courses in the Recommended Program of Study.

Recommended Program of Study  
Certificate in Live Sound Design  
and Technology

**First Year**

<b>First Semester</b>	<b>Credit</b>
CETT 1303 DC Circuits.....	3
CETT 1325 Digital Fundamentals.....	3
MUSC 1405 Live Sound I.....	4
MUSC 2402 Sound Systems Technician.....	4

MUSC 1120 Live Sound Workshop.....	1
<b>Total Hours.....</b>	<b>15</b>
<b>Second Semester</b> ..... <b>Credit</b>	
CETT 1305 AC Circuits.....	3
MUSC 2403 Live Sound II .....	4
MUSC 1400 Sound System Design and Installation .....	4
MUSC 1423 Audio Electronics.....	4
<b>Total Hours.....</b>	<b>15</b>
<b>Grand Total.....</b>	<b>30</b>

# Department of Health, Fitness & Sports



**Chair:** Scott Street  
**Office:** Carl Parker Center, Office 102  
**Email:** [athletics@lamarpa.edu](mailto:athletics@lamarpa.edu)  
**Phone:** 409-984-6292

The Department of Health, Fitness and Sport provides a broad series of courses to enhance the mental, social and physical well-being of students, faculty and staff.

The department offers courses of study leading to an Associate of Arts Degree in Teaching (EC-12 Kinesiology) or an Associate of Arts Degree with an emphasis in Kinesiology, which also satisfies the Core Curriculum requirements at all state colleges and universities in Texas. The associate degrees will transfer to schools that offer four-year baccalaureate degrees.

The department also offers a wide variety of physical activity classes which fulfill the Core Curriculum requirements.

Fitness courses, sport activity courses (credit and non-credit) and a variety of sports events are

available to enrich the lives of everyone associated with the College.

## Associate of Arts Degrees

### Kinesiology

**Contact:** Scott Street  
**Office:** Carl Parker Center, Office 102  
**Email:** [streetasa@lamarpa.edu](mailto:streetasa@lamarpa.edu)  
**Phone:** 409-984-6292

The Associate of Arts Degree in Kinesiology parallels the first two years of study of Kinesiology baccalaureate programs at state colleges and universities in Texas. The associate degree requires forty eight (48) semester credit hours of courses from the Core Curriculum at Lamar State College Port Arthur, plus fifteen (15) semester credit hours of Kinesiology.

### Recommended Program of Study Associate of Arts Degree in Kinesiology

<b>Course</b> .....	<b>Credit</b>
Core Curriculum Courses (See pg 58).....	42
BCIS 1305 Business Computer Applications .....	3
KINE .....	<u>15</u>
<b>Total Hours.....</b>	<b>60</b>

*Students are advised to take BIOL 2301, BIOL 2101, BIOL 2302 and BIOL 2102, Human Anatomy and Physiology I and II, to meet the science requirements of the Core Curriculum.*

### Teaching Physical Education EC-12

The Associate of Arts Degree in Teaching Physical Education EC-12 is designed for students who plan

to pursue a baccalaureate degree in education to be certified to teach physical education classes at some level from early childhood kindergarten through grade 12.

Recommended Program of Study  
Associate of Arts in Teaching  
Physical Education EC-12

<b>Course</b> .....	<b>Credit</b>
Core Curriculum Courses (See pg 58).....	42
BCIS 1305 Business Computer Applications .....	3
EDUC 1301 Introduction to the Teaching Profession .....	3
EDUC 2301 Introduction to Special Populations....	3
KINE .....	9

**Total Hours**..... 60

*Students are advised to take BIOL 2401 and 2402, Human Anatomy and Physiology I and II, to meet the science requirements of the Core Curriculum.*

Physical Education General Activity Courses (PHED)

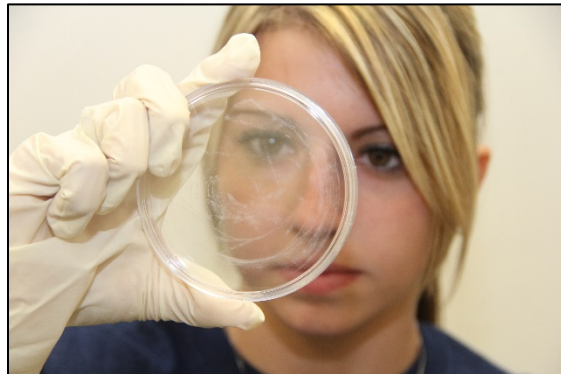
The physical education general activity courses are designed to increase student awareness of fitness, health concepts and lifestyle modification. They include laboratories and practical activities which help students in their attempt to improve the quality of life and achieve well-being.

# Department of General Education and Developmental Studies

**Department Chair:** Dr. Michelle Davis  
**Office:** Education Building, Office 233  
**Email:** [davism1@lamarpa.edu](mailto:davism1@lamarpa.edu)  
**Phone:** 409-984-6330

The Department of General Education and Developmental Studies provides instruction in a variety of subjects including art, biology, chemistry, English, drama, government, history, humanities, mathematics, philosophy, physics, and speech courses. The courses satisfy the requirements for an Associate of Arts Degree in Academic Studies and the Certificate in Academic Studies.

Degree plans are designed to 1) satisfy the requirements of the Core Curriculum and 2) to ensure that courses successfully transfer to a



baccalaureate program.

## Associate of Arts Degree

1. Academic Studies
2. Emphasis in Criminal Justice
3. Emphasis in Teaching Art EC-12
4. Emphasis in Studio Art

## Certificate

1. Academic Studies

## Associate of Arts Degrees

### Academic Studies

**Contact:** Dr. Michelle Davis  
**Office:** Education Building, Office 233  
**Email:** [davism1@lamarpa.edu](mailto:davism1@lamarpa.edu)  
**Phone:** 409-984-6341

The Emphasis in Academic Studies curriculum is designed for students who plan to pursue a baccalaureate degree but are undecided about a specific major. The degree plan provides a Core Curriculum that will transfer to any state-supported college or university in Texas. It includes the general education requirements for almost any baccalaureate degree. Electives beyond the Core Curriculum allow students to explore various disciplines in order to determine a major (See Core Curriculum, page 61).