

Recommended Program of Study
Certificate in Live Sound Design
and Technology

First Year

First Semester	Credit
CETT 1303 DC Circuits.....	3
CETT 1325 Digital Fundamentals.....	3
MUSC 1405 Live Sound I.....	4
MUSC 2402 Sound Systems Technician.....	4

MUSC 1120 Live Sound Workshop.....	1
Total Hours.....	15
Second Semester	Credit
CETT 1305 AC Circuits.....	3
MUSC 2403 Live Sound II	4
MUSC 1400 Sound System Design and Installation	4
MUSC 1423 Audio Electronics.....	4
Total Hours.....	15
Grand Total.....	30

Department of Health, Fitness & Sports



Chair: Scott Street
Office: Carl Parker Center, Office 102
Email: athletics@lamarpa.edu
Phone: 409-984-6292

The Department of Health, Fitness and Sport provides a broad series of courses to enhance the mental, social and physical well-being of students, faculty and staff.

The department offers courses of study leading to an Associate of Arts Degree in Teaching (EC-12 Kinesiology) or an Associate of Arts Degree with an emphasis in Kinesiology, which also satisfies the Core Curriculum requirements at all state colleges and universities in Texas. The associate degrees will transfer to schools that offer four-year baccalaureate degrees.

The department also offers a wide variety of physical activity classes which fulfill the Core Curriculum requirements.

Fitness courses, sport activity courses (credit and non-credit) and a variety of sports events are

available to enrich the lives of everyone associated with the College.

Associate of Arts Degrees

Kinesiology

Contact: Scott Street
Office: Carl Parker Center, Office 102
Email: streetasa@lamarpa.edu
Phone: 409-984-6292

The Associate of Arts Degree in Kinesiology parallels the first two years of study of Kinesiology baccalaureate programs at state colleges and universities in Texas. The associate degree requires forty eight (48) semester credit hours of courses from the Core Curriculum at Lamar State College Port Arthur, plus fifteen (15) semester credit hours of Kinesiology.

Recommended Program of Study Associate of Arts Degree in Kinesiology

Course.....	Credit
Core Curriculum Courses (See pg 58).....	42
BCIS 1305 Business Computer Applications	3
KINE	15
Total Hours.....	60

Students are advised to take BIOL 2301, BIOL 2101, BIOL 2302 and BIOL 2102, Human Anatomy and Physiology I and II, to meet the science requirements of the Core Curriculum.

Teaching Physical Education EC-12

The Associate of Arts Degree in Teaching Physical Education EC-12 is designed for students who plan

to pursue a baccalaureate degree in education to be certified to teach physical education classes at some level from early childhood kindergarten through grade 12.

Recommended Program of Study
Associate of Arts in Teaching
Physical Education EC-12

Course	Credit
Core Curriculum Courses (See pg 58).....	42
BCIS 1305 Business Computer Applications	3
EDUC 1301 Introduction to the Teaching Profession	3
EDUC 2301 Introduction to Special Populations....	3
KINE	9

Total Hours..... 60

Students are advised to take BIOL 2401 and 2402, Human Anatomy and Physiology I and II, to meet the science requirements of the Core Curriculum.

Physical Education General Activity Courses (PHED)

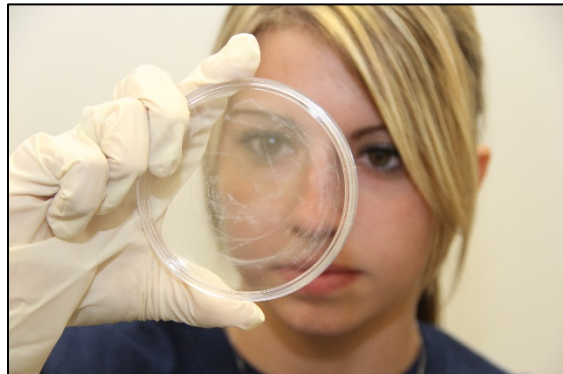
The physical education general activity courses are designed to increase student awareness of fitness, health concepts and lifestyle modification. They include laboratories and practical activities which help students in their attempt to improve the quality of life and achieve well-being.

Department of General Education and Developmental Studies

Department Chair: Dr. Michelle Davis
Office: Education Building, Office 233
Email: davism1@lamarpa.edu
Phone: 409-984-6330

The Department of General Education and Developmental Studies provides instruction in a variety of subjects including art, biology, chemistry, English, drama, government, history, humanities, mathematics, philosophy, physics, and speech courses. The courses satisfy the requirements for an Associate of Arts Degree in Academic Studies and the Certificate in Academic Studies.

Degree plans are designed to 1) satisfy the requirements of the Core Curriculum and 2) to ensure that courses successfully transfer to a



baccalaureate program.

Associate of Arts Degree

1. Academic Studies
2. Emphasis in Criminal Justice
3. Emphasis in Teaching Art EC-12
4. Emphasis in Studio Art

Certificate

1. Academic Studies

Associate of Arts Degrees

Academic Studies

Contact: Dr. Michelle Davis
Office: Education Building, Office 233
Email: davism1@lamarpa.edu
Phone: 409-984-6341

The Emphasis in Academic Studies curriculum is designed for students who plan to pursue a baccalaureate degree but are undecided about a specific major. The degree plan provides a Core Curriculum that will transfer to any state-supported college or university in Texas. It includes the general education requirements for almost any baccalaureate degree. Electives beyond the Core Curriculum allow students to explore various disciplines in order to determine a major (See Core Curriculum, page 61).