

to pursue a baccalaureate degree in education to be certified to teach physical education classes at some level from early childhood kindergarten through grade 12.

Recommended Program of Study
Associate of Arts in Teaching
Physical Education EC-12

| | |
|---------------------------------------------------------|---------------|
| Course | Credit |
| Core Curriculum Courses (See pg 58)..... | 42 |
| BCIS 1305 Business Computer Applications | 3 |
| EDUC 1301 Introduction to the Teaching Profession | 3 |
| EDUC 2301 Introduction to Special Populations.... | 3 |
| KINE | 9 |

Total Hours..... **60**

Students are advised to take BIOL 2401 and 2402, Human Anatomy and Physiology I and II, to meet the science requirements of the Core Curriculum.

Physical Education General Activity Courses (PHED)

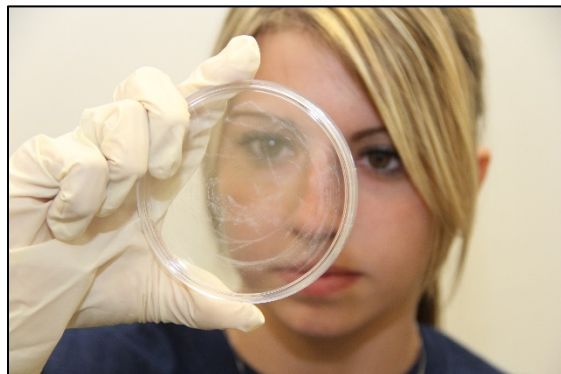
The physical education general activity courses are designed to increase student awareness of fitness, health concepts and lifestyle modification. They include laboratories and practical activities which help students in their attempt to improve the quality of life and achieve well-being.

Department of General Education and Developmental Studies

Department Chair: Dr. Michelle Davis
Office: Education Building, Office 233
Email: davism1@lamarpa.edu
Phone: 409-984-6330

The Department of General Education and Developmental Studies provides instruction in a variety of subjects including art, biology, chemistry, English, drama, government, history, humanities, mathematics, philosophy, physics, and speech courses. The courses satisfy the requirements for an Associate of Arts Degree in Academic Studies and the Certificate in Academic Studies.

Degree plans are designed to 1) satisfy the requirements of the Core Curriculum and 2) to ensure that courses successfully transfer to a



baccalaureate program.

Associate of Arts Degree

1. Academic Studies
2. Emphasis in Criminal Justice
3. Emphasis in Teaching Art EC-12
4. Emphasis in Studio Art

Certificate

1. Academic Studies

Associate of Arts Degrees

Academic Studies

Contact: Dr. Michelle Davis
Office: Education Building, Office 233
Email: davism1@lamarpa.edu
Phone: 409-984-6341

The Emphasis in Academic Studies curriculum is designed for students who plan to pursue a baccalaureate degree but are undecided about a specific major. The degree plan provides a Core Curriculum that will transfer to any state-supported college or university in Texas. It includes the general education requirements for almost any baccalaureate degree. Electives beyond the Core Curriculum allow students to explore various disciplines in order to determine a major (See Core Curriculum, page 61).

Recommended Program of Study
Associate of Arts Degree in
Academic Studies

| Course | Credit |
|------------------------------------------------|---------------|
| Core Curriculum Courses (See pg 58)..... | 42 |
| BCIS 1305 Business Computer Applications | 3 |
| Electives | 15 |
| Total Hours | 60 |

Students should consult with an advisor to determine the appropriate electives. Electives must be academic transfer courses.

Certificate in Academic Studies

Students pursuing the Associate of Arts Degree in any major can earn an Academic Certificate by completing Core Curriculum (See Core Curriculum, page 61).

Recommended Program of Study
Certificate in Academic Studies

| Course | Credit |
|------------------------------------------|---------------|
| Core Curriculum Courses (See pg 58)..... | 42 |
| Total Hours | 42 |

Emphasis in Criminal Justice

Contact: Dr. Michelle Davis
Office: Education Building, Office 233
Email: davism11@lamarpa.edu
Phone: 409-984-6341

The Emphasis in Criminal Justice curriculum is designed for students who plan to pursue a bachelor's degree in Criminal Justice. The curriculum requires coursework in basic criminal justice principles and concepts and allows students to complete the degree plan. The degree plan follows the field-of-study curriculum prescribed by the *Texas Higher Education Coordinating Board*.

Recommended Program of Study
for an Associate of Arts Degree in
Criminal Justice

| Course | Credit |
|------------------------------------------------------------------------------------------|---------------|
| Core Curriculum Courses (See pg 58)R..... | 42 |
| COSC 1301 Introduction to Computing or BCIS 1305 Business Computer Applications | 3 |
| CRIJ 1301 Introduction to Criminal Justice | 3 |

| | |
|---------------------------------------------------|-----------|
| CRIJ 1306 Court System and Practices | 3 |
| CRIJ 1310 Fundamentals of Criminal Law | 3 |
| CRIJ 2313 Correctional Systems and Practices..... | 3 |
| CRIJ 2328 Police Systems and Practices..... | 3 |
| Total Hours | 60 |

Emphasis in Teaching Art EC-12⁸

Contact: Dr. Michelle Davis
Office: Education Building, Office 233
Email: davism11@lamarpa.edu
Phone: 409-984-6341

The Teaching Art EC-12 curriculum is designed for students who plan to pursue a baccalaureate degree in education to be certified to teach art classes from early childhood / kindergarten through grade 12.



Course content is aligned as applicable with State Board for Educator Certification Pedagogy and Professional Responsibilities standards and must include a minimum of 16 contact hours of field experience in P-12 classrooms.

Students must pass a criminal background check in order to participate in field experience. Students must provide criminal background documentation during the first week of class.

Recommended Program of Study
Associate of Arts Degree in
Teaching Art EC-12

| Course | Credit |
|------------------------------------------------------------|---------------|
| Core Curriculum Courses (See pg 58)..... | 42 |
| BCIS 1305 Business Computer Applications | 3 |
| EDUC 1301 Introduction to Teaching Profession... | 3 |
| EDUC 2301 Introduction to Special Populations.... | 3 |
| ARTS 1303 Art History or ARTS 1304 Art History II | 3 |
| ARTS Courses | 6 |
| Total Hours | 60 |

⁸ EC-12 certification area allows you to teach art at the elementary through high school level, Early Childhood through 12th grade.

To fulfill the Core Curriculum requirement, students should take ARTS 1301 to satisfy the Creative Arts requirement and the ARTS 1303 or ARTS 1304 to satisfy the Language/Philosophy/Culture requirement of the Core Curriculum.

Emphasis in Studio Art

Contact: Dr. Michelle Davis
Office: Education Building, Office 233
Email: davisml1@lamarpa.edu
Phone: 409-984-6341

The Associate of Arts Degree in Studio Art curriculum is designed for students who plan to work toward a traditional Bachelor of Arts degree or a professional Bachelor of Fine Arts degree. It also is recommended for students who are undecided about majoring in art, but who would like to explore their artistic abilities.

Recommended Program of Study Associate of Arts Degree in Studio Art

| Course..... | Credit |
|------------------------------------------------------------|-----------|
| Core Curriculum Courses (See pg 58)..... | 42 |
| BCIS 1305 Business Computer Applications | 3 |
| ARTS 1303 Art History or ARTS 1304 Art History II | 3 |
| ARTS Courses | <u>12</u> |
| Total Hours | 60 |

To fulfill the Core Curriculum requirement, students should take ARTS 1301 to satisfy the Creative Arts requirement of the Core Curriculum and should take ARTS 1303 or ARTS 1304 to satisfy the Language/Philosophy/Culture requirement of the Core Curriculum.

Mathematics Courses (MATH)

Prerequisites for any college level mathematics courses are listed in the table below.

| Math Course | Prerequisite Requirements |
|--------------------------------------|--------------------------------------------------------------------------------------------------------------------------------------------------------------------------------------------------------------------------------------------------------|
| MATH 1332 | Successful completion of DMTH 0132, or SAT math score of 500 or higher, or ACT math score of 19 or higher, or TSI math score of 350 or higher, or any other applicable exemption claimed under 19 TAC §4.54 that qualifies the student for the class |
| MATH 1314 or 1316 | Successful completion of DMTH 0314 0332, SAT Math score of 500 or higher; or ACT math score of 19 or higher, OR TSI math score of 350 or higher, or any other applicable exemption claimed under 19 TAC §4.54 that qualifies the student for the class |
| MATH 1325, 1342, 2305 or 2312 | MATH 1314 |
| MATH 1350 or 1351 | MATH 1314, MATH 2312, MATH 2413, MATH 2414 |

Developmental Education

Director: Sarah McQueen
Office: Student Center, Office 414
Email: mcqueensa@lamarpa.edu
Phone: 409-984-6321

The Department of Developmental Education provides a comprehensive program of preparatory courses in composition, mathematics and reading to help students acquire the basic skills necessary to complete a college level course of study. The department helps the college's commitment to accommodate students with diverse goals and backgrounds.

The department also operates the Student Success Center, which supports the formal developmental education instructional program through testing, tutorial services and a system for self-paced

instruction. The center also provides information about the content of the tests conducted through the Texas Higher Education Assessment Program.

Student Success Center (SSC)

SSC 101, 102 Individualized Instruction..... 0:0:1

Self-paced tutorial lab instruction for students needing individualized remediation. The SSC requirement pertains to students in ENGL 0301, ENGL 0310, MATH 0313 and MATH 0332.

NOTE: The lab or SSC requirement for any developmental course must be completed concurrently with that course, or a grade of "FD" will be issued for the course.

SSC101 is reading and writing remediation, SSC102 is math remediation

Workforce Training & Continuing Education

Contact: Dr. Ben Stafford
Office: Madison Monroe Education Bldg.,
Office 121A
Email: workforce@lamarpa.edu
Phone: 409-984-6354; 984-6230

Workforce Training

Maintaining a talented and productive workforce in a growing local economy requires a commitment to employee development. LSCPA meets the training needs of your business by partnering with you to tailor a custom learning curriculum that can be delivered on site or on campus to employees.

Our goal is to provide quality training that is current, convenient, and highly effective.

Continuing Education

Lamar State College Port Arthur recognizes that providing lifelong learning opportunities is an integral part of its primary mission of teaching and community service. Continuing Education courses and programs are an extension of the traditional college learning process, available to community residents in appropriate subject areas where there is sufficient interest.

Noncredit and continuing education courses are generally open to anyone who is eighteen (18) years of age or older, with provision for enrolling younger students under certain conditions.

Courses may be offered where there are qualified instructors, suitable facilities on or off campus, and sufficient demand. Various instructional methods and techniques are used to accomplish the objectives of the courses, including lecture, laboratory practice, seminars, workshops, conferences, and presentation via the Internet.

The College welcomes suggestions and requests for non-credit courses.

Examples of Courses Offered

- Central Sterilization Technician
- Commercial Driver's License, Class A & B
- Intermediate Welding Training
- Leadership Training
- Medication Aide
- Microsoft Office™
- Nurse Aide
- Professional development for licensed individuals
- Quickbooks™
- Safety Training (OSH10, OSH30)