

2014-15

LAMAR STATE COLLEGE PORT ARTHUR

REPORT TO THE COMMUNITY





PRESIDENT'S MESSAGE

WE ARE **GROWING STRONG** AT LAMAR STATE COLLEGE PORT ARTHUR



At Lamar State College Port Arthur, there is a sense of anticipation. The college is on the precipice of great change and the students, faculty and staff, as well as the community, are excited at the opportunities and improvements that sit just on the horizon.

For more than a century, excellence has been the driving force behind Lamar State College Port Arthur and now it is the future on which we affix our sights as we maintain our diligence in helping students reach their educational goals.

Lamar State College Port Arthur features a strong business curriculum combined with a solid liberal arts core, which provides the foundation upon which all majors are built. The growth of our career degree and certificate offerings, along with the already solid academic core, provide a great opportunity for students while still maintaining an affordable price.

With our anticipated growth in programs, and therefore student population, the next logical turn is to grow the campus physically.

The construction of a new educational building is being planned. The Technical Education Center will house current programs and allow for new technology degree and certificate programs. In addition, plans are being finalized for the construction of an on-campus housing facility. Tentatively, the student housing facility is set to be completed and ready for use by the Fall 2016 semester.

The future at Lamar State College Port Arthur is exciting and it arrives at our doorsteps every day as we see more and more people coming to the campus in search of their dreams.

As we take a look back at all we've accomplished over the past year, we keep firmly in mind that we must continue to keep putting our best foot forward.

A handwritten signature in cursive script that reads "Betty Reynard".

Dr. Betty Reynard

President, Lamar State College Port Arthur

COMMITMENT TO EDUCATION

Lamar State College Port Arthur is an open-access, comprehensive public two-year college offering quality instruction leading to associate degrees and a variety of technical certificates. The college has provided affordable educational opportunities to residents of Southeast Texas since 1909.

Lamar State College Port Arthur embraces the premise that education is an on-going process that enhances career potential, broadens intellectual horizons and enriches life. The faculty, staff and administration share a commitment to a mission characterized by student learning, diversity and community service.

The foundations for student success include educational programs designed to accommodate students with diverse goals and backgrounds, technical education programs that provide the skills and knowledge necessary for employment, and a core curriculum that develops the values and concepts that allow the student to make a meaningful contribution in the workplace or community.

Student achievement is measured by the completion of courses and programs of study, successful performance following transfer to a baccalaureate program and the attainment of individual goals.



NEW FACILITIES

A new footprint for the future has been set thanks to the decisions made by the close of the 84th Texas Legislative Session on May 31, 2015.

A \$209.4 billion budget included \$80.5 million in tuition backed revenue bonds to fund construction at the region's four area colleges, including Lamar State College Port Arthur.

"The faculty, staff and students are very excited about the funding the Lamar State College Port Arthur will receive," Dr. Betty Reynard, LSCPA President, said. "The anticipated funds will allow a key construction project that will help the college continue to grow physically which, in turn, allows the college the serve more students.

"We have been approved to receive approximately \$8.1 million. Those funds will enable us to construct a Technology Education Center to house current programs such as Instrumentation Technology and Process Technology. The funding also allows for the addition of new technology degree and certificate programs."

Dr. Reynard continued: "Increases in HEAF and general revenue will allow us to better manage college operations and facilities.

The construction of the new facility comes at a time when LSCPA is nearing the start of a student residence hall on campus. Plans include a tentative completion date in Spring 2018.

"Our primary goal is to offer the best programs available and to do so, we must have first-class facilities. It's what our students demand of their tuition dollars and it is certainly what they deserve." —Dr. Betty Reynard

"Lamar State College Port Arthur has long been a regional presence in higher education," Dr. Reynard said. "Adding a residence hall opens up our campus to the world. With new programs, improved facilities and the existing top quality faculty, LSCPA can attract some of the top students from across the nation."





STUDENT ACTIVITIES

The Student Activities Office, coupled with the Student Government Association, kept things lively on campus this past year, sponsoring events and programs throughout the Fall 2014 and Spring 2015 semesters.



BEATLES TRIBUTE

Among the most popular events of the year was the Beatles Tribute Concert. In a campus-wide collaboration that included Commercial Music, Theater and Student Activities, LSCPA commemorated two milestones for the Fab Four. The event featured a Beatles concert performed by two separate Commercial Music bands, while local Swamp Pop legend Jivin' Gene Bourgeois also sang several songs to the overflow crowd in the parking lot of the Carl Parker Multipurpose Center.

MARDI GRAS MADNESS

Sure, you've seen the floats roll by, enjoyed the music and maybe even caught a few beads and trinkets. But have you ever been IN a Mardi Gras parade?

Mardi Gras 2015 was the opportunity for anyone who wanted to participate to march down Procter Street as LSCPA opened the 2015 Mardi Gras of Southeast Texas with a walking parade leaving the Carl Parker Multipurpose Center and heading for the festival main gate.

Revelers brought hand towels, handkerchiefs and umbrellas for a Traditional New Orleans 2nd Line Street Parade.

FOOD FOR OUR NEIGHBORS

The annual Thanksgiving Food Drive generated donations of more than 3,000 containers of non-perishable food for area food pantries.

The final tally of 3,218 containers was announced during the homecoming basketball game with Chi Alpha collecting the most, 675.

Student volunteers packed the donations into boxes, loaded them into a truck, and delivered them to food pantries at the Hospitality Center, the Salvation Army and the Port Cities Rescue Mission.

KEVIN TRAN TAKES TOP NATIONAL SKILLSUSA AWARD

Software Development major Kevin Tran earned one of the top spots in the nation during the June 2015 SkillsUSA competition in Louisville, Kentucky.

Tran, a resident of Port Arthur, earned a bronze medal in Computer Programming after taking first in the same event at the state competition in Waco in March.

The competition in which Tran competed consists of project coding and output, a skill-related written test and an interview. More than 5,000 contestants competed in 98 separate

events this week in Kentucky, judged by leaders in labor and management from across the nation.

Other LSCPA students participated in the state-level competition, including Jessica Crook of Port Arthur took third in Web Design and An Vo of Port Arthur who placed third in Prepared Speech. Others who competed in Web Design were James Holt and Ezquiel Garcia, both of Beaumont.

SAVING LIVES: DISTRACTED DRIVING SKILLS

Eleven teens die every day while driving and texting. Distracted driving causes 330,000 injuries a year and 1.6 million accidents happen because someone isn't paying attention to the task of driving.

Lamar State College Port Arthur worked to change those numbers with a special presentation as part of the annual Health and Safety Week. The "Save a Life" tour event featured an Edutainment Distracted Driving Simulator, which shows the effects of texting while driving. The interactive simulator allows students to drive a simulated car while attempting to receive and send messages.

WORKFORCE TRAINING

As the nation roared out of a tough recession, the need for a quality, well-trained workforce came to light.

Lamar State College Port Arthur has answered that need with the addition of three Workforce Training programs and a revival of relationships with area industry through offering Continuing Education courses.

“The region is ripe with opportunity for people who are willing to get the education and training they need to be a vital member of the local workforce,” Dr. Ben Stafford, Dean of Workforce Training & Continuing Education at LSCPA, said. “We found that people here are ready and they are excited for the chance to enhance their lives with better careers through education.”

WORKFORCE TRAINING

The creation of a trio of Workforce Training programs at LSCPA was a priority for new college President Dr. Betty Reynard when she arrived in September 2014.

Over the course of just a few months, the fledgling program blossomed into a full-out affiliation between the school, the City of Port Arthur and its Economic Development Corporation and the Port Arthur Independent School District.

“There was a need that was readily evident, so it was an easy decision to go in this direction as quickly as we could,” Dr. Reynard said of the evolution of the Workforce Training Program. “Residents of Port Arthur and Southeast Texas were ready for the opportunity to learn more and to increase their value as potential employees. Since we started the program, we’ve seen a great response both from incoming students and the employers who are eagerly awaiting this newly trained workforce.”

The program delves into the areas of commercial driving with a CDL Class B course offering students the opportunity to learn as well as a chance for scholarship and immediate job placement. Courses are also offered for nurse aide and medication aide.

Between the PAISD, City of Port Arthur and the Port Arthur Economic Development Corporation, a scholarship was born to help interested students make their way into the classroom and eventually out into the workforce.

A collaboration of LSCPA, the City of Port Arthur, Port Arthur Independent School District and the Port Arthur Economic Development Corporation has resulted in a Workforce Training scholarship for those seeking a Commercial Drivers License. Pictured, from left, are PAISD Superintendent Mark Porterie, Mayor Bobbie Prince, LSCPA President Dr. Betty Reynard and EDC Director Floyd Batiste.



“The primary objective of the Workforce/Continuing Education department is to plan and promote full use of the college’s resources to assist individual, business, industry and community growth through training and education,” Dr. Stafford said. “All programs are intended to enrich, strengthen and support those who are not supported by the traditional instructional activities of the college.”

After 45 hours of classroom instruction and 54 hours of experience driving with excellent instructors, a student is ready to take on a job as a Class B CDL driver with great earning potential, as much as \$40,000 a year to start.

In the medical field, there is a great need for Certified Nurse Aides and Certified Medication Aides. LSCPA offers courses that take less than four months to complete for certification.

“There is such a high demand for Nurse Aides across the state of Texas,” Dr. Stafford said. “This is a fantastic opportunity for someone who is interested in a career as a CNA or for a person who wants an entry level position in the field of medicine.” The Medication Aide course is for those already certified as a CNA but seeking to expand career options.

CUSTOMIZED TRAINING

Aside from the Workforce Training Program, LSCPA offers customized training when and where it’s needed by local business and industry.

“We can design and plan training tailored to meet a business’ unique needs,” Dr. Stafford explained. “Training allows businesses to up-skill workers and keep current with changing technology in such industries as petrochemical, manufacturing and general business.”



A Midsummer Night's Dream

For some, “art” means paint on canvas. For others, art is a dramatic soliloquy at center stage. And there are those who express art from behind a microphone with a guitar in hand.

Whatever the definition, Lamar State College Port Arthur serves as muse and mentor for those seeking artistic enlightenment. And a recent ranking of Fine Arts schools in Texas says LSCPA is among the best.

Online fine arts information source, best-art-colleges.com, ranks LSCPA 5th among state colleges its size for its programs, which features degrees and certificates in Theater, Commercial Music and Art.

“We offer a personal touch in the education of our students,” said Theater instructor Damon Gengo. “This is true of every department on campus. Many of our students get to perform in a band, put their visual artworks in front of the public and take the stage, acting frequently.”

Theater presentations are met with rave reviews as both the student performers and the facilities at LSCPA work in concert to impress audiences during multiple shows each year.

“We have grown the program from the ground up and students have always been valued and considered to be of utmost importance to the success of the program,” Arts instructor Grace Megnet said. “We believe that there is tremendous potential in the birthplace of one of the greatest artists of the 20th Century, Robert Rauschenberg.”

“The Fine Arts faculty is dedicated,” Megnet said. “We care for all our students, offering our expertise, enthusiasm and kindness. The success of our graduates serves to re-enforce the strength and continuity of our efforts.”



Clybourne Park



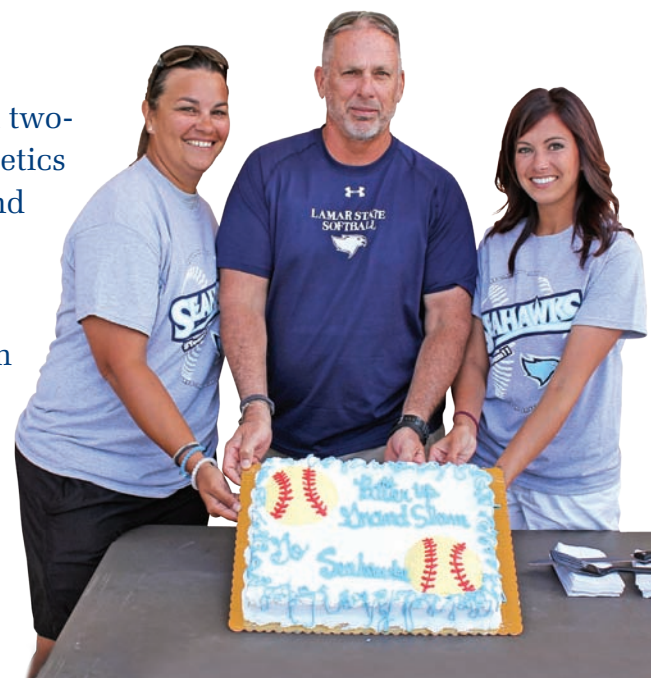
Clybourne Park



PORT ARTHUR HIGHER EDUCATION FOUNDATION OFFERS \$100,000 MATCHING GRANT FOR ATHLETICS PROGRAMS

The Port Arthur Higher Education Foundation announced a two-year, \$100,000 matching grant to benefit the Seahawks Athletics Program, providing scholarship opportunities for current and future athletes as well as contributing to the department's daily working budget.

Lamar State College Port Arthur started its athletics program in 2004 with the advent of men's basketball and women's softball teams. Since then, the two programs have ushered in championship banners for their successes athletically and academic honors for work in the classroom.



SEAHAWKS SOFTBALL SETS SCHOOL RECORDS, MAKES FIRST-EVER TRIP TO NJCAA REGION 14 TOURNAMENT

The Seahawks softball team set a school record for wins and made history with its first-ever regional tournament appearance.

In 2015, the Seahawks won 30 games for the first time in the program's 11-year history. They traveled to Angelina where they faced elimination after losses to Navarro and Tyler Junior College.

The Seahawks won seven of the last eight regular-season games in one of the toughest regions in the nation in order to clinch the trip to the tournament.

Over the final eight games, the Seahawks swept Coastal Bend College, Laredo College and split with Galveston College, ranked in the Top 25 in the nation earlier this season. The season came down to a home doubleheader against Alvin Community College, which the Seahawks swept for the postseason berth.

SEAHAWK ATHLETICS HONORED BY UNITED WAY FOR COMMUNITY SERVICE

During the United Way of Mid & South Jefferson County's annual banquet, LSCPA received recognition for the community service provided by the college's athletes over the past year. The Seahawks

men's basketball and women's softball teams represent the college at various events and functions, working to help the community in which they live.

Community service has long been a focus of the athletics department at LSCPA, which is led by Director of Athletics, Scott Street.

The Seahawks softball team received the school's team award for community service hours served, while sophomore pitcher Angelica Rogers earned the individual award after collecting 68 hours of community service over the school year.



Who's Who

1. Students, faculty and staff of Lamar State College Port Arthur follow one of several parade floats during Mardi Gras 2015. The Thursday night parade featured LSCPA in a walking parade that also included the Budweiser Clydesdales.
2. The Legends of Liverpool were the featured act at the 12th Annual Gulf Coast Gala. The Beatles tribute band was created by Louise Harrison, the sister of late-Beatle George Harrison. Louise made an appearance to introduce the band for the Gala.
3. A tribute to The Beatles by the Commercial Music Department, also included period costumes and themed foods during the event. The event, which was open to the community, featured music from the Beatles.
4. Members of the Seahawks softball team pose for a photo with care packages for military personnel overseas. The holiday remembrances were sent as part of the team's community service efforts this past December.
5. The LSCPA Cosmetology Program students pose with a resident of a Port Arthur nursing home. Students spent time with residents, providing manicures.
6. Pulitzer Prize-winning journalist Ron Suskind was the featured guest at the Distinguished Lecture Series in Fall 2014.
7. Students pose for a photo before the 12th Annual Gulf Coast Gala.

SCHOLARSHIPS

During the 2014-15 school year, many benefactors came through again to support LSCPA and its students, donating scholarship funds to provide opportunities for students to pursue their dreams.

For the third consecutive year, Flint Hills Resources Port Arthur invested in the students of Port Arthur through scholarships. Flint Hills Resources presented a \$10,000 contribution to the Port Arthur Higher Education Foundation to be used for scholarships in the Process Technology and Instrumentation programs at Lamar State College Port Arthur. This is the third allocation by **Flint Hills Resources**, bringing its total contribution to the college to \$26,000.

Angela Webb, Director of Nursing at **Golden Triangle Emergency Center**, recently presented a scholarship check to Lamar State College Port Arthur nursing student Heather Landry. Webb said the scholarship

was presented to help encourage non-traditional students who may have children or are working while going to school. "We want to help those people who are dedicated to getting their degree in spite of setbacks or hardships. Those are the people we want to see in nursing."

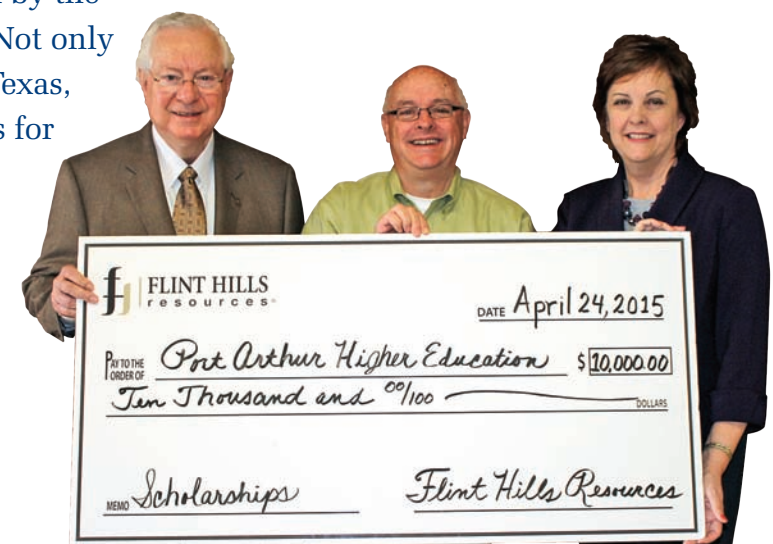
AFFILIATIONS

One of the oldest nursing programs in the area is keeping up to date by joining forces with the newest provider of emergency care, **Golden Triangle Emergency Center**.

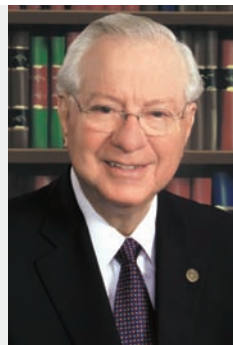
Eursula Davis, coordinator of Lamar State College Port Arthur's Vocational Nursing (LVN) Program, and Shirley MacNeill, coordinator of the Upward Mobility (LVN-to-RN) Nursing Program, recently signed an affiliation agreement with the state-of-the-art freestanding emergency center located at 8035 Memorial Blvd., in Port Arthur, across U.S. 69 from Central Mall.

Lamar State College Port Arthur's success is driven by the interaction it has with surrounding communities. Not only do students come from every corner of Southeast Texas, but the region's residents visit the college's campus for many public events.

Over the past year, LSCPA has welcomed visitors for concerts, special speakers, the annual Fourth of July celebration and a new Mardi Gras parade sparked by the college's students.



PORT ARTHUR HIGHER EDUCATION FOUNDATION



Dr. W. Sam Monroe



A. Morris Albright



Floyd W. Marceaux



Ed Boone

The Port Arthur Higher Education Foundation is a non-profit organization formed in 1973. Its purpose is to promote the arts, sciences and programs of Port Arthur College, which later became Lamar State College Port Arthur.

The foundation's early role included assisting the College in acquiring property surrounding the campus and in making special contributions, such as providing \$125,000 to purchase books for the Gates Memorial Library after city voters donated the library to the College.

The foundation's current primary purpose is to administer more than \$6 million in permanently endowed scholarships for Lamar State College Port Arthur students. The awards bear the names of longtime community members, celebrities and local social and civic clubs, including Robert Rauschenberg, H.S. and Bernice B. Anderson, Lloyd

and Joe Hayes, Sydalise Fredeman, G.W. Bailey and the Port Arthur Rotary Club.

A 15-member board of directors comprised of community and education leaders administers the foundation according to established by-laws. Lamar State College Port Arthur receives applications for the foundation's scholarships, which may be awarded based on academic merit, financial need or both.

Officers include Chairman of the Board A. Morris Albright, Vice Chairman Floyd W. Marceaux, President Dr. W. Sam Monroe and Secretary/Treasurer Ed Boone. Directors include John Comeaux, William Coons, Leonard Gabriel Jr., Jeff Hayes, Joel Levingston, James W. Moore, Brian McDougal, Carl A. Parker, George Taylor, and Bill Worsham.

ALUMNI ASSOCIATION



The Lamar State College Port Arthur Alumni Association traces its history back to 1917 when the Port Arthur College Alumni Association was organized. The Association supports the college in a number of ways, primarily by providing scholarships through an endowment.

The current officers are James W. Moore, President; Renella Primeaux, Vice President; Claire Thomason, Secretary; and Carol Wommack, Treasurer.

The Board of Directors include Michelle Askew, Michelle Bruno, Dr. Cate Carabelle, John Chirafis, Dr. Barbara Huvall, Michelle Judice, Dr. Charles Gongre, Linda McMahan, Dr. W. Sam Monroe, Rose PreJean, and Dana Wasser. Board of Director Emeritus is Kathleen Carabelle.

The most recent scholarship recipients include Tony Jackson, Charles Martin Scholarship; Crystal Payton, Juliette "Dodo" George Scholarship; Kaela Johnson, Joan Brown Scholarship; Evan Craft, Fred and Leila M. Erwin Scholarship; and Heather Landry, Nancy Hardy and Karla Galindo, Alumni Association Scholarship.

INSTITUTIONAL GOALS

EDUCATIONAL OPPORTUNITIES

Provide educational opportunities that are flexible in scheduling, location, delivery method and content for instructional programs

GENERAL EDUCATION/CORE CURRICULUM

Offer freshman and sophomore general education/core curriculum courses, which will transfer to traditional baccalaureate degree programs, with opportunities to acquire higher order intellectual skills in inquiry, problem solving and critical thinking

INFORMATION LITERACY

Provide opportunities to acquire information literacy skills, common to all disciplines, that allow a student to recognize when information is needed; to have the ability to locate and evaluate information; to establish the authenticity, validity, and reliability of information; and to effectively use needed information

EMPLOYMENT SUPPORT

Provide instruction and/or support services that will improve the potential for employment and/or occupational advancement as well as meet the needs of employers

ADMINISTRATIVE AND EDUCATIONAL SUPPORT

Provide students with personal attention in a broad range of student service activities, educational support services for instructional programs, and provide responsible oversight of the College's physical and financial resources

COMMUNITY INVOLVEMENT

Continue and enhance institutional advancement efforts targeted toward the needs of local communities, cooperate with community agencies in economic development and community partnerships, and provide cultural enrichment opportunities, both on and off campus

MISSION

Lamar State College Port Arthur, a member of The Texas State University System, is an open-access, comprehensive public two-year college offering quality and affordable instruction leading to associate degrees and a variety of certificates. The College embraces the premise that education is an ongoing process that enhances career potential, broadens intellectual horizons, and enriches life.



PRINCIPLES

Lamar State College Port Arthur operates in the belief that all individuals should be:

- Treated with dignity and respect;
- Afforded equal opportunity to acquire a complete educational experience;
- Given an opportunity to discover and develop their special aptitudes and insights; and,
- Provided an opportunity to equip themselves for a fulfilling life and responsible citizenship in a world characterized by change.

CORE VALUES

- Shared commitment by faculty, staff and administration to a mission characterized by student learning, diversity, and community involvement.
- General education/core curriculum that develops the values and concepts that allow the student to make a meaningful contribution in the workplace or community.
- Academic and technical programs designed to fulfill our commitment to accommodate students with diverse goals and backgrounds, using a variety of delivery methods, on and off campus.
- Technical education programs that provide for the acquisition of the knowledge, skills and behavior necessary for initial and continued employment.
- Student achievement characterized by attainment of individual goals and measured by successful accomplishments and completion of curriculum.
- Co-curricular opportunities that develop social, financial and civic acuity.

COLLEGE PROFILE



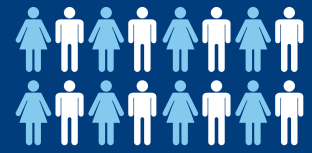
Enrollment

FALL 2014 **2,078**
SPRING 2015 **1,881**

Academic Majors **1,197** **1,104**
Technical Majors **881** **777**

Full-Time Students **898** **782**
Part-Time Students **1,180** **1,099**

In-State Students **2,040** **1,848**
Out-of-State Students **30** **23**
Foreign Students **8** **10**



FALL 2014 **28:1**
SPRING 2015 **27:1**
Faculty-to-Student Ratio

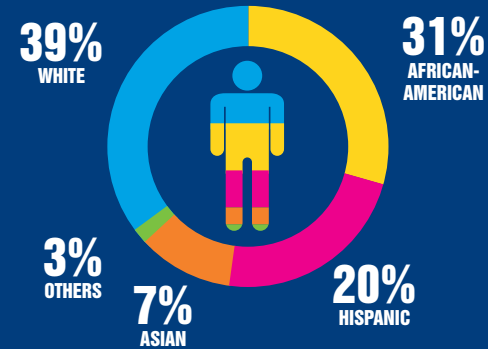
Average Age **26** **26**
Male **681** **699**
Female **1,397** **1,182**

FALL 2014 **179** **183**
SPRING 2015
Degrees Awarded
Certificates Awarded **57** **83**

2014 Source: Certified CBM001 & in-house reports. Degrees & Certificates awarded are from the Fall 2014 graduation only.

2015 Source: In-house reports. Degrees & Certificates awarded are from the Spring 2015 graduation only.

STUDENT ETHNICITY



TEXAS STATE UNIVERSITY SYSTEM BOARD OF REGENTS

The Texas State University System is governed by a nine-member Board of Regents appointed by the governor. In addition, a nonvoting student regent is appointed annually to the board.

- | | |
|---|---|
| CHARLIE AMATO
San Antonio | ROSSANNA SALAZAR
Austin |
| VERONICA MUZQUIZ EDWARDS
San Antonio | WILLIAM SCOTT
Nederland |
| DR. JAIME GARZA
<i>Chairman</i>
San Antonio | ALAN L. TINSLEY
Madisonville |
| DAVID MONTAGNE
Beaumont | DONNA N. WILLIAMS
Arlington |
| VERNON REASER III
Bellaire | SPENCER COPELAND
<i>Student Regent</i>
Huntsville |

LAMAR STATE COLLEGE PORT ARTHUR ADMINISTRATION

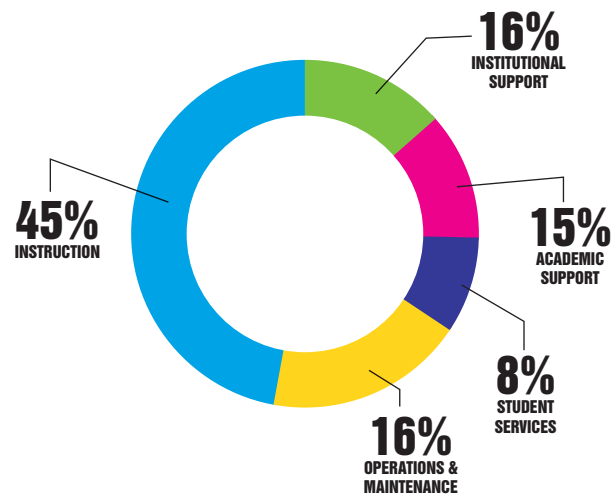
- DR. BETTY REYNARD
President
- DR. GARY STRETCHER
Vice President for Academic Affairs
- MARY WICKLAND, C.P.A.
Vice President for Finance
- DR. DEBORRAH HEBERT
Dean for Student Services
- SHEILA TRAHAN
Dean of Technical Programs
- PETER KAATRUDE
Dean of Library Services
- DR. BEN STAFFORD
Dean of Workforce Training and Continuing Education
- DR. NANCY STRETCHER
Director, Institutional Effectiveness
- SHEILA GUILLOT
Chair, Department of Business and Technology
- DR. PERCY JORDAN
Chair, Department of Math and Science
- SHERRY STEELE
Chair, Department of Developmental Education
- DR. BARBARA HUVAL
Chair, Department of Liberal Arts
- JOHN FREYERMUTH
Chair, Department of Music

TEXAS STATE UNIVERSITY SYSTEM ADMINISTRATION

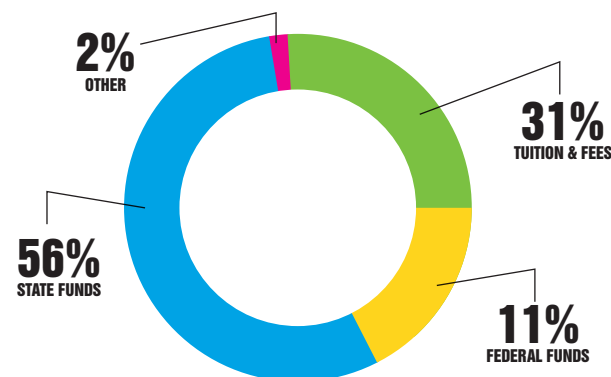
- | | |
|--|---|
| BRIAN MCCALL, Ph.D.
<i>Chancellor</i> | DIANE CORLEY, J.D.
<i>Associate General Counsel</i> |
| PERRY MOORE, Ph.D.
<i>Vice Chancellor for Academic Affairs</i> | NELLY HERRERA, J.D.
<i>Associate General Counsel</i> |
| FERNANDO C. GOMEZ, J.D., Ph.D.
<i>Vice Chancellor and General Counsel</i> | TAMMYE CURTIS-JONES, J.D.
<i>Associate General Counsel</i> |
| SEAN CUNNINGHAM, J.D.
<i>Vice Chancellor for Governmental Relations</i> | CHARLES GREGORY, CISA, CGEIT
<i>Associate Director</i> |
| ROLAND K. SMITH, Ph.D.
<i>Vice Chancellor for Finance</i> | CLETUS BIANCHI
<i>Executive Director of Texas State University System Foundation</i> |
| DANIEL HARPER, M.B.A.
<i>Deputy Vice Chancellor for Finance</i> | CAROLE M. FOX, C.P.A.
<i>Director of Audits and Analysis</i> |
| CLAIRE JACKSON, C.P.A.
<i>Associate Vice Chancellor for Finance</i> | MIKE WINTEMUTE
<i>Associate Vice Chancellor for Governmental Relations</i> |
| PETER GRAVES, J.D.
<i>Vice Chancellor for Contract Administration</i> | KELLY WINTEMUTE, M.B.A.
<i>System Compliance Specialist</i> |
| ROB ROY PARNELL, AIA, RAS
<i>Associate Vice Chancellor for Facilities</i> | |

LAMAR STATE COLLEGE PORT ARTHUR 2014-2015

EXPENSES



REVENUE



COMBINED SCHOLARSHIPS

Lamar State College-Port Arthur awards over 500 scholarships every year. Among these are scholarships made available by the following individuals and organizations:

ENDOWED SCHOLARSHIPS

“A Class Act” Drama Club Scholarship
SSgt. Lucian Adams Scholarship
Ahlbom Family Memorial Scholarship
A. Morris Albright Scholarship
H.S. & Bernice B. Anderson Scholarship
Ella Atwell Memorial Scholarship
G.W. Bailey Scholarship
Sue Bates Scholarship
Better Business Bureau Scholarship
Gail Bienvenu Memorial Scholarship
Beulah Bosarge Scholarship
Donald T. Boumans Memorial Scholarship
Miss Marie Bright Scholarship
W.A. “Dub” Brown Scholarship
Dr. Ronald Buchanan Scholarship
John B. & Estelle M. Caldwell Scholarship
Carabelle Family Scholarship
Bobby Terrell Cowart Scholarship for Legal Assistants
Fred S. Davis, Jr. Scholarship
Del Papa Distributing Company College Endowment
Department Club of Port Arthur
Jennie Mae Duhon Estate Scholarship
Manton L. Dunham & Delwin D. Dunham
Memorial Scholarship
Gabby Eldridge Scholarship
Endowed Nursing Scholarship
Dr. Jim Garcia Scholarship
Jane Goins-Flanagan Scholarship
Sydalise Fredeman Award
John W. Gates Scholarship
Juliette George Scholarship
Golden Triangle Cajun Association
Betty Guarnere Scholarship
Joe & Lloyd Hayes Memorial Scholarship
Mary Evelyn Dunn Hayes Scholarship
Wilbur & Josephine Hebert Scholarship
Norman Helms Scholarship
LCdr. Peter D. Herlin Memorial Scholarship
Dr. Mark Honea Scholarship
John C. Huval Memorial Award
Norma Provost Irwin Scholarship Fund
Joe James Memorial Scholarship
O’Dell James Memorial Scholarship Fund
Judice Family Scholarship
Kiwanis Club of Port Arthur
Sam Aquilina Scholarship
Kiwanis Club of Port Arthur
Leland Lacy Memorial Scholarship
Kiwanis Club of Port Arthur
Pat Wood Memorial Scholarship
Logan Family Memorial Scholarship
by John & Shirley Logan Riedmueller
Dr. Charles Lance Lyday Scholarship
John Robert Mansinger Scholarship
Ann & Floyd Marceaux Scholarship
Herman & Carol Mazur Scholarship Fund
W. K. Milner Scholarship
Dr. Madison & Mrs. Thelma Monroe
Memorial Scholarship

Dr. Sam Monroe Scholarship Fund
Everette Ford Montgomery Memorial Scholarship
Charles E. Neumann Scholarship
North Port Arthur Rotary Club Memorial Scholarship
Parker Family Scholarship Fund
Marlene & Roosevelt Petry Jr. Scholarship
Phi Theta Kappa
Pilot Club of Port Arthur
Volney & Florence Pinder Scholarship
Mildred & William J. Pitts Memorial Scholarship
Mary Kay Place Scholarship
Mack A. Pond Scholarship by Rotary Club of Port Arthur
Port Arthur Founder’s Lions Club -
Thomas S. Balac/James A. DeLee Scholarship
Port Arthur Garden Council
Port Arthur Improvement Association
Port Arthur Men’s & Women’s Bowling Association
Port Arthur Respiratory Disease Trust
Port Arthur Symphony Club Scholarship
David A. Provost Memorial Scholarship
Bodie Pryor Scholarship
Robert Rauschenberg Scholarship Fund
Retail Merchants Association Scholarship Fund
Prof. W.E. Sampson Scholarship
Capt. Wm. Sanders Chapter of DAR
Mary Skeff Schlesinger & A. W. Schlesinger
Scholarship Fund
South Jefferson County Medical Society
Alliance Scholarship
Mac Timmerman Jr. Scholarship
TOTAL Petrochemicals & Refining USA, Inc.
Scholarship
Jack & Beverly Verret Scholarship
Carl & Stella White/DAR Scholarship
Elsie & William White Memorial Scholarship
Wommack Family Scholarship

GENERAL SCHOLARSHIPS

40 & 8 Nationale Voiture #312
American Legion Auxiliary #33
American Legion Post #33
Aurora-Golden Triangle Sertoma Club
Baptist Hospital Auxiliary
Beaumont Diocesan Council of Catholic Women
J. T. & Usha Beckman
Cadence Trust
Cathedral of Faith Baptist Church
Philip Childree Memorial Scholarship
Choctaw Nation of Oklahoma
James Paul Collins
Mary A. Crippen & Blake Crippen
Department of Texas VFW
Eber W. Ephlin Scholarship Fund
First United Methodist Church, Port Neches
Flint Hills, LLC
Gene Graham Safety Foundation
Avery Anne Guerra Memorial Foundation
Jefferson Extension Education Association
Knights of Columbus Council #12809
Knights of Columbus Port Neches Council #2461

Koch Companies Public Sector, LLC
Burk McGreevy
Medical Center of Southeast Texas Hospital Auxiliary
Mexican Heritage Society
New Light Church World Outreach & Worship Centers, Inc.
Our Lady of Guadalupe Church
Port Arthur ISD Education Foundation
Port Neches-Groves High School
Port Neches Groves Little Dribblers
Rotary Club of Port Arthur – Taste of Gumbo
St. Charles Church
Louis Saldana
Julian C. Salter, Jr.
Mary S. Schlesinger & A.W. Schlesinger Scholarship
by LU Foundation, Inc.
Rowdy C. Slaughter
SE TX Independent Cattlemen’s Association
Silsbee Chapter #298 Order of the Eastern Star
Nelda C. & H. J. Luther Stark Foundation
STI Group Foundation
Texas Bowling Centers Association
Texas Juvenile Justice Department
Texas Rice Festival, Inc.
The Pipeliner’s Association of Houston
TOTAL Petrochemicals & Refining USA, Inc.
MCL 1st SGT. Joyce Venable
Trinity Neches Sabine District TWUA
Tyler County Farm Bureau
UPS Education Assistance Program

LAMAR STATE COLLEGE PORT ARTHUR

Alumni Association of Lamar State College-Port Arthur
Joan Brown/LSCPA Alumni Association
Centennial Scholarship
Commercial Music Scholarship
Drama Scholarship
Educator’s Memorial Scholarship
Fred & Leila Mae Erwin/LSCPA Alumni Association
Juliette George/LSCPA Alumni Association
Charles Martin/LSCPA Alumni Association
Renella Primeaux/LSCPA Alumni Association
Seahawk Super Scholar Scholarship
UIL One-Act Play Competition Scholarship
UIL-TETA Drama Scholarship
Dana Wasser/LSCPA Alumni Association

PORT ARTHUR INDUSTRIAL GROUP (PAIG)

Air Products
BASF TOTAL Petrochemicals LLC
Chevron Phillips Chemical Co.
Flint Hills Resources
Motiva Enterprises
Oxbow Calcining, LLC
Port Arthur Steam Entergy
Praxair
Shell Pipeline Company
TOTAL Petrochemicals & Refining USA, Inc.
Valero-Port Arthur Refinery
Veolia ES Technical Solutions

DEGREE AND CERTIFICATE PROGRAMS

ASSOCIATE OF ARTS

- ★ Academic Studies
- ★ Business Administration
- ★ Criminal Justice
- ★ Drama
- ★ Kinesiology
- ★ Studio Art
- ★ Teaching {EC-12 Art}
- ★ Teaching {EC-12 Theatre Arts}
- ★ Teaching {EC-12 Music}
- ★ Teaching {EC-12 Physical Education}

ASSOCIATE OF APPLIED SCIENCE

- ★ Accounting
- ★ Administrative Assistant
- ★ Audio Visual Production
- ★ Commercial Music/Performance
- ★ Commercial Music/Sound Engineer
- ★ Cosmetology Instructor
- ★ Cosmetology Operator
- ★ Drug and Alcohol Abuse Counseling
- ★ Graphic Design
- ★ Instrumentation Technology
- ★ Medical Coding Specialist
- ★ Medical Office Administration
- ★ Network Specialist
- ★ Paralegal
- ★ Process Technology
- ★ Software Developer
- ★ Surgical Technology
- ★ Upward Mobility Nursing

CERTIFICATE

- ★ Accounting Assistant
- ★ Administrative Assistant
- ★ Automotive Service Technician
- ★ Automotive Technology
- ★ Commercial Music (Performance)
- ★ Computer Programmer
- ★ Cosmetology Instructor
- ★ Cosmetology Operator
- ★ Entertainment Business
- ★ Esthetics
- ★ Graphic Design
- ★ Instrumentation Level 1
- ★ Medical Coding
- ★ Medical Office Assistant
- ★ Multi-Media & Design {55+ Program}
- ★ Network Specialist
- ★ Nurse Aid Certificate
- ★ Process Technology
- ★ Receptionist
- ★ Surgical Technology
- ★ Vocational Nursing

Lamar State College-Port Arthur is an equal opportunity/affirmative action educational institution and employer. Students, faculty and staff members are selected without regard to their race, color, creed, handicap, age, sex or national origin, consistent with the Assurance of Compliance with Title VI of the Civil Rights Act of 1964; Executive Order 11246 as issued and amended; Title IX of the Education Amendments of 1972, as amended; and Section 504 of the Rehabilitation Act of 1973. Inquiries concerning application of these regulations should be referred to the Vice President for Academic Affairs, Dr. Gary Stretcher, by phone 409-984-6209 or by mail at P.O. Box 310, Port Arthur, TX 77641-0310.

ACCREDITATIONS

Lamar State College-Port Arthur is accredited or approved by:

Lamar State College Port Arthur is accredited by the Southern Association of Colleges and Schools Commission on Colleges (SACSCOC) to award degrees at the associate level. Contact the Commission on Colleges at 1866 Southern Lane, Decatur, Georgia 30033-4097 or call (404) 679-4500, at <http://www.sacs.org> for questions about the accreditation of Lamar State College Port Arthur.

The College is approved by the Texas Education Agency for training veterans under all classifications. The College is also a member of or approved by the American Bar Association, the Commission on Accreditation of Allied Health Education Programs (CAAHEP), the Texas Department of Aging and Disability Services, the Texas Certification Board of Addiction Professionals, the Texas Department of Licensing and Regulation, the Texas Board of Nursing, the Accreditation Review Council on Education in Surgical Technology and Surgical Assisting (ARC/STSA), the U.S. Department of Education and the Veterans Administration.



LSCPA

LAMAR STATE COLLEGE ★ PORT ARTHUR

1500 PROCTER STREET ★ PORT ARTHUR, TEXAS 77641
409.984.6100 ★ 800.477.5872 ext. 6100 ★ www.lamarpa.edu

An Equal Opportunity / Affirmative Action Educational Institution.

MEMBER THE TEXAS  STATE UNIVERSITY SYSTEM™